

KARURA VIEW

APARTMENTS

KARURA VIEW

Apartments

Entrance to
Commercial
Parking

Residents
Entrance



KARURA VIEW

Apartments

Welcome to Karura View Apartments where modern luxury meets nature's tranquility. Located along the iconic Ring Road in Parklands, this architectural masterpiece offers breathtaking views of the serene Karura Forest, blending vibrant city living with the calming embrace of nature.

Designed for ambitious, active, and forward-thinking individuals like you, Karura View Apartments redefine what it means to live in the heart of the city. Imagine waking up to panoramic views of lush greenery while enjoying the convenience of a prime urban location. This is more than a home it's a lifestyle crafted to elevate you and your family's everyday living experience.

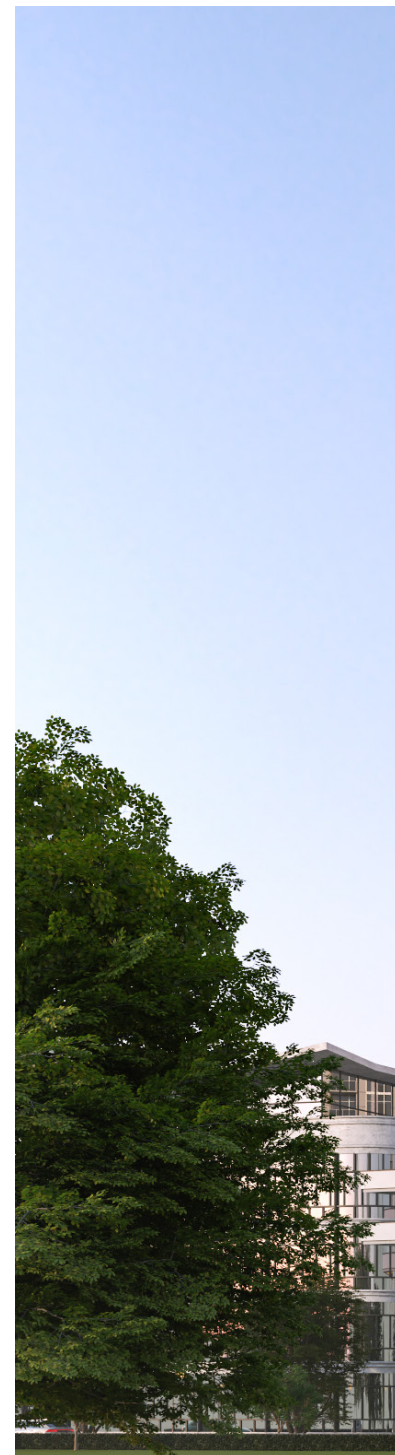
Invest in a future where sophistication meets serenity, where every detail is designed to inspire. We don't just build homes; we create spaces where life flourishes. Your dream lifestyle begins at Karura View Apartments. Don't miss this opportunity. for more information www.ikhlahomes.co.ke.

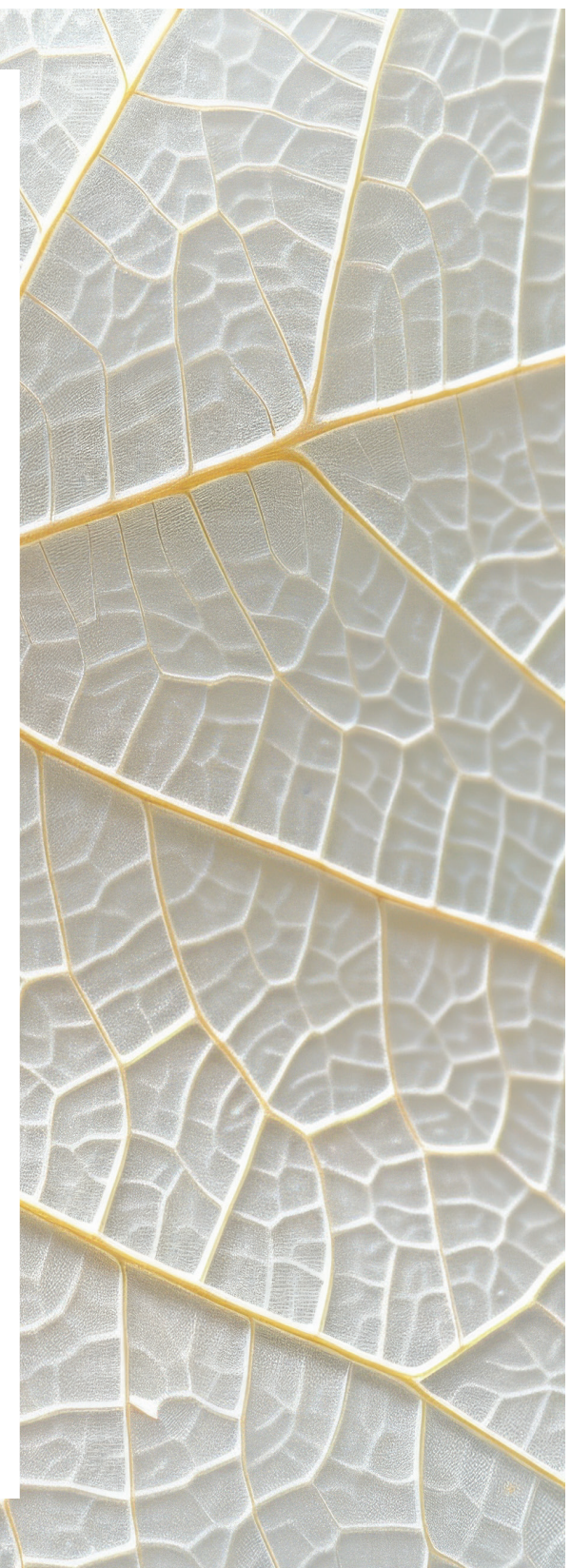
This residential complex consists of:

- 5 Bedroom Duplex (335 sq.m).
- 4 Bedroom + Dsq (250 sq.m).
- 3 Bedroom + Dsq (200 sq.m).
- 2 Bedroom (124 sq.m).



An authentic work of art
with charming and elegant
details designed to exceed
the highest of expectations.





FEATURES



01
SHOPS



04
SPACIOUS LOUNGE



02
BACKUP POWER



05
CCTV & 24HR SECURITY



03
GYM



06
MADRASSA

AMENITIES

- >Commercial parking
- >Swimming Pool.
- >Gymnasium
- >4 High speed lifts
- >Madrasa
- >Power Backup Generator

TYPICAL APARTMENT LAYOUT (UPPER) 6TH-20TH FLR

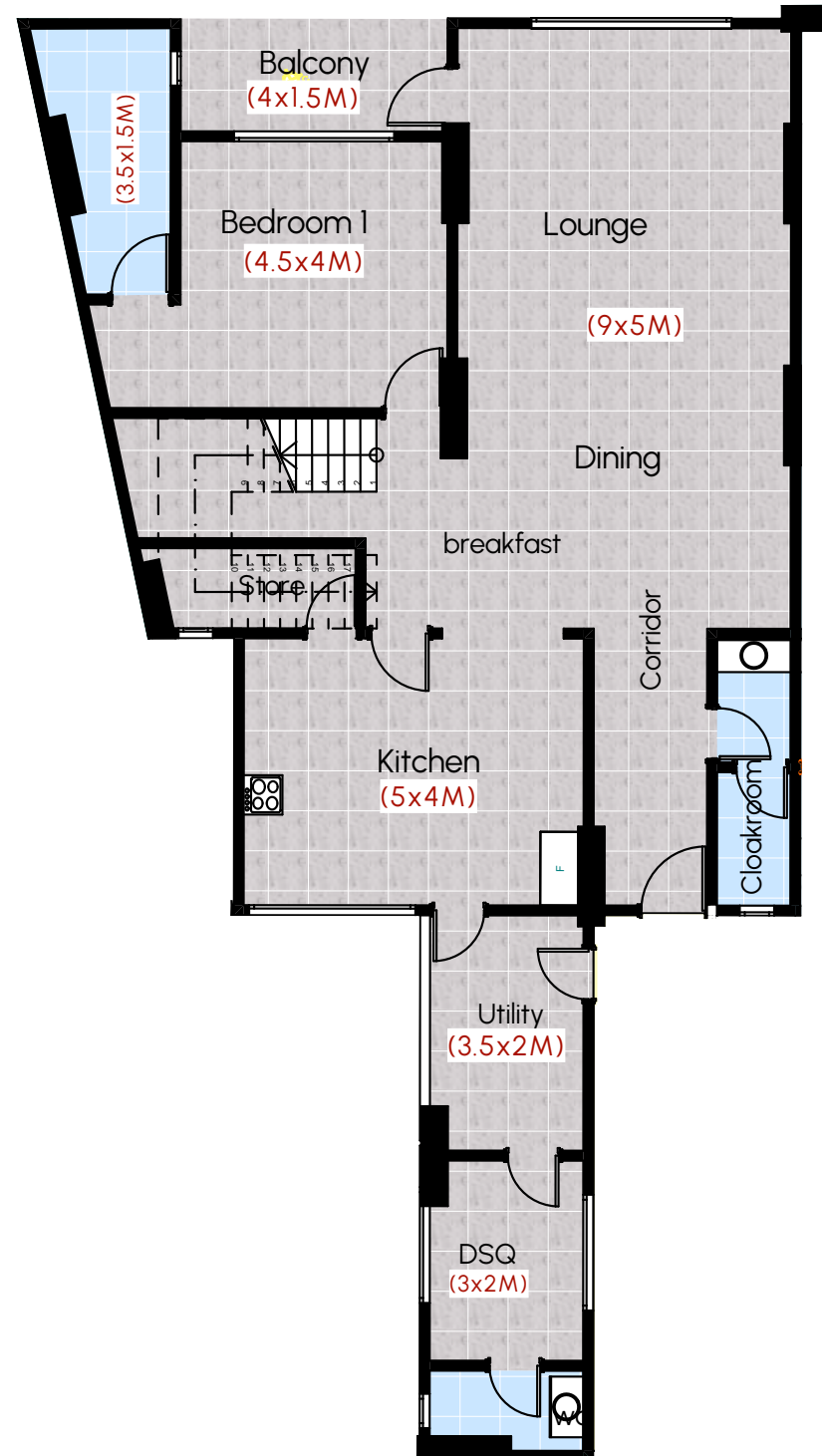


LOWER FLOOR PLAN

Name Apartment A

Type (Duplex)
5 BEDRM+DSQ
Lounge,Dining,1 Bedroom
Kitchen,Balcony,1 Bath
& Dsq

Area 155 sqm



APARTMENT A | 5 BEDROOM + DSQ
335 sqm



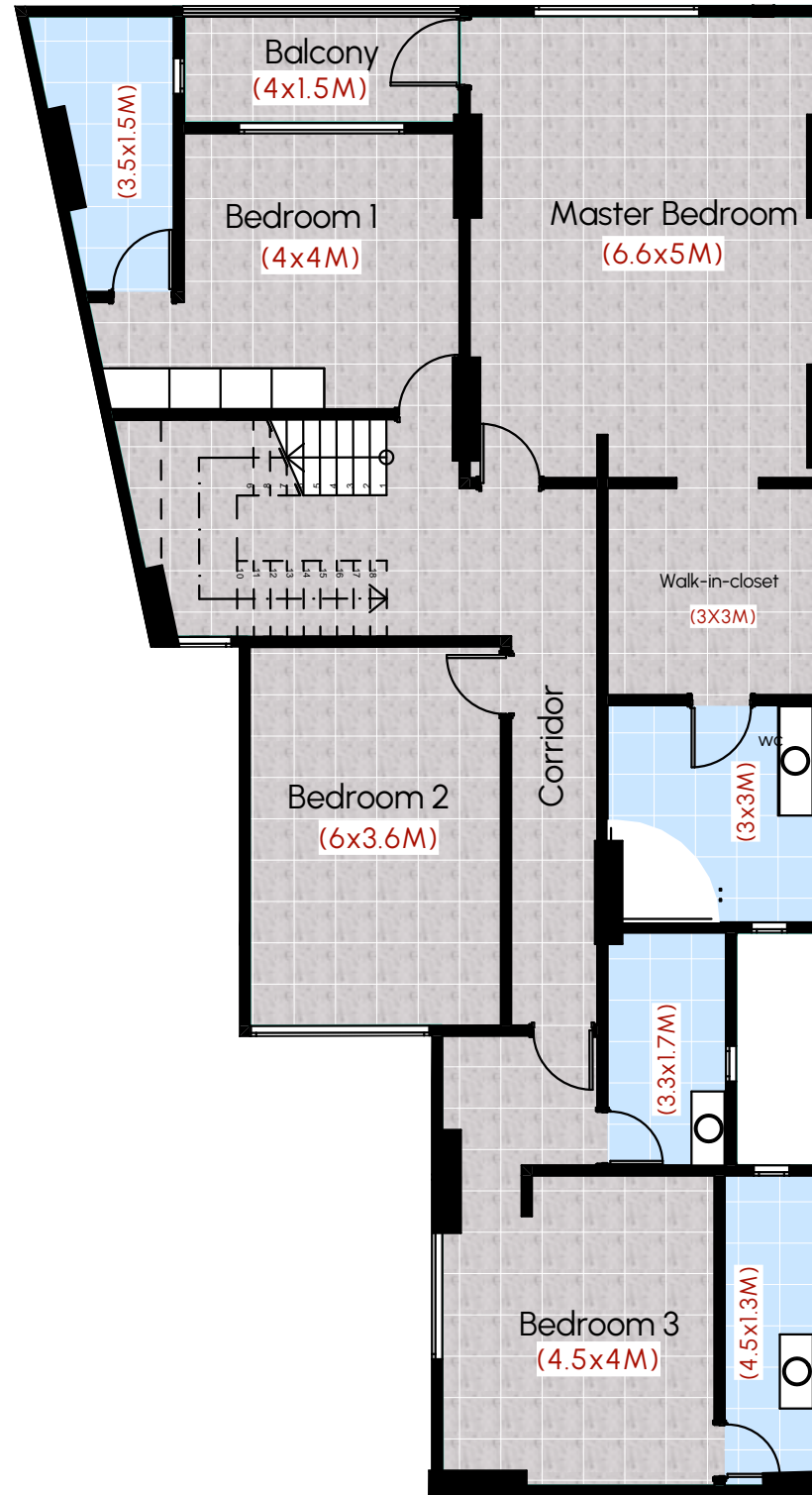
- 1.Entry Lobby
- 2.Dining
- 3.Kitchen
- 4.Dsq
- 5.Utility/Yard
- 6.WC/SH
- 7.Lounge
- 8.Balcony
- 9.Bedroom 01

UPPER FLOOR PLAN

Name Apartment A

Type (Duplex)
5 BEDRM+DSQ
Master Bedroom, 3 Bedrooms
Balcony & 4 Baths

Area 180 sqm



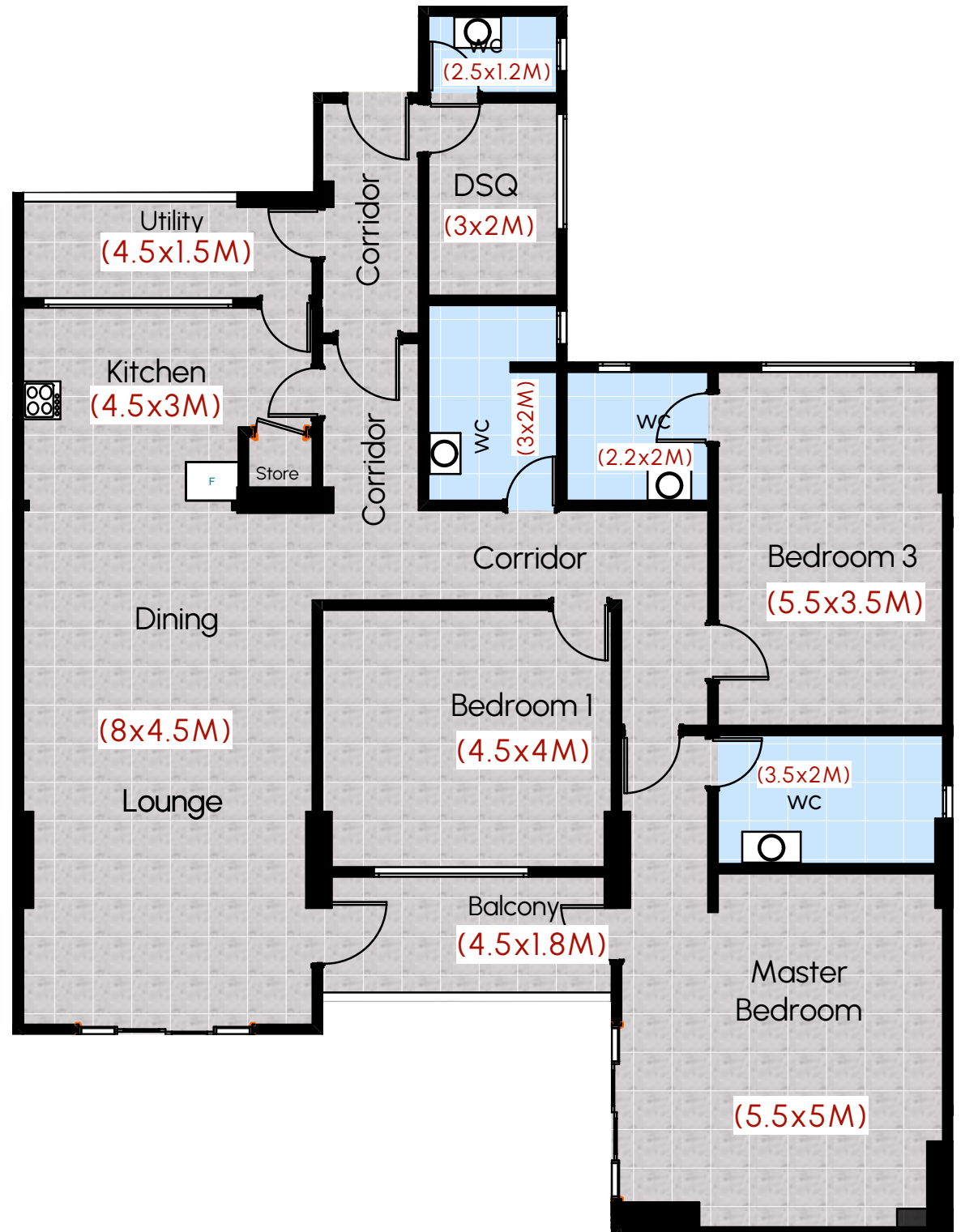
APARTMENT A | 5 BEDROOM + DSQ
335 sqm



- 1.WC/SH
- 2.Balcony
- 3.Master Bedroom
- 4.Bedroom 02
- 5.Bedroom 03
- 6.Bedroom 04

FLOOR PLAN

Name	Apartment B
Type	3 BEDRM+DSQ Kitchen,Dining,lounge Master Bedroom,2 Bedrooms Balcony & 4 Baths
Area	200 sqm



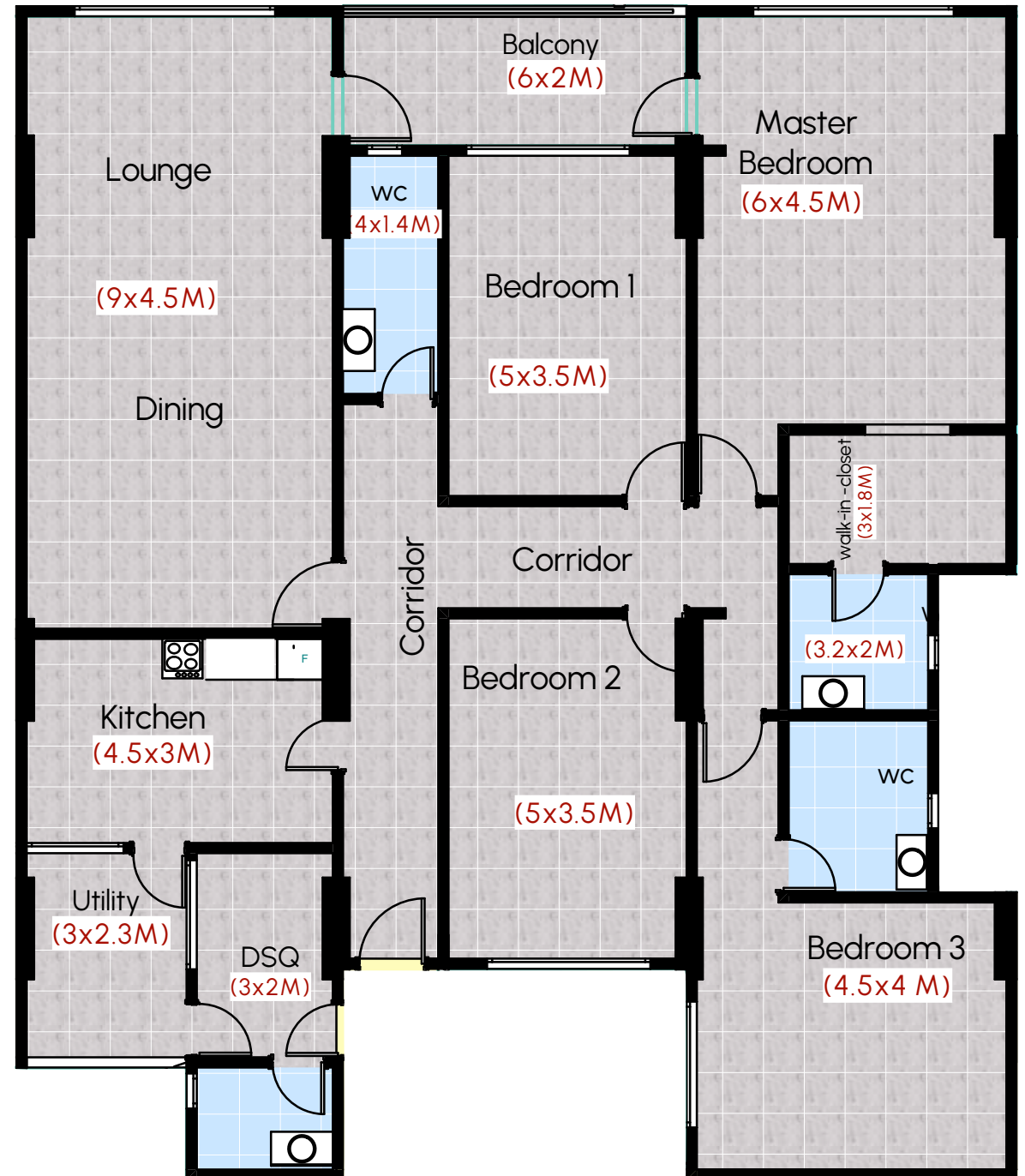
APARTMENT B | 3 BEDROOM + DSQ
200 sqm



- 1.Entry Lobby
- 2.Dining
- 3.Kitchen
- 4.Dsq
- 5.Utility/Yard
- 6.WC/SH
- 7.Lounge
- 8.Balcony
- 9.Master Bedroom
- 10.Bedroom 01
- 11.Bedroom 02

FLOOR PLAN

Name	Apartment C
Type	4 BEDRM+DSQ Kitchen,Dining,lounge Master Bedroom,3 Bedrooms Balcony & 4 Baths
Area	230 sqm



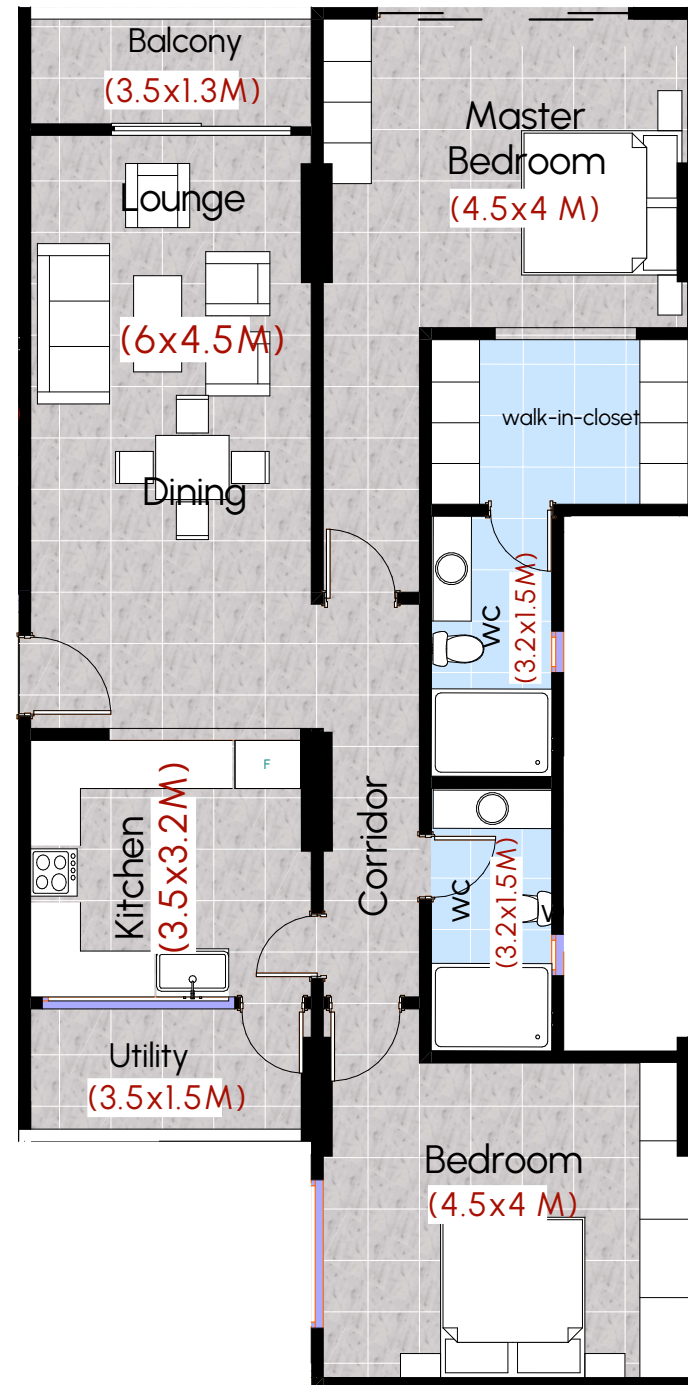
APARTMENT C | 4 BEDROOM + DSQ
230 sqm



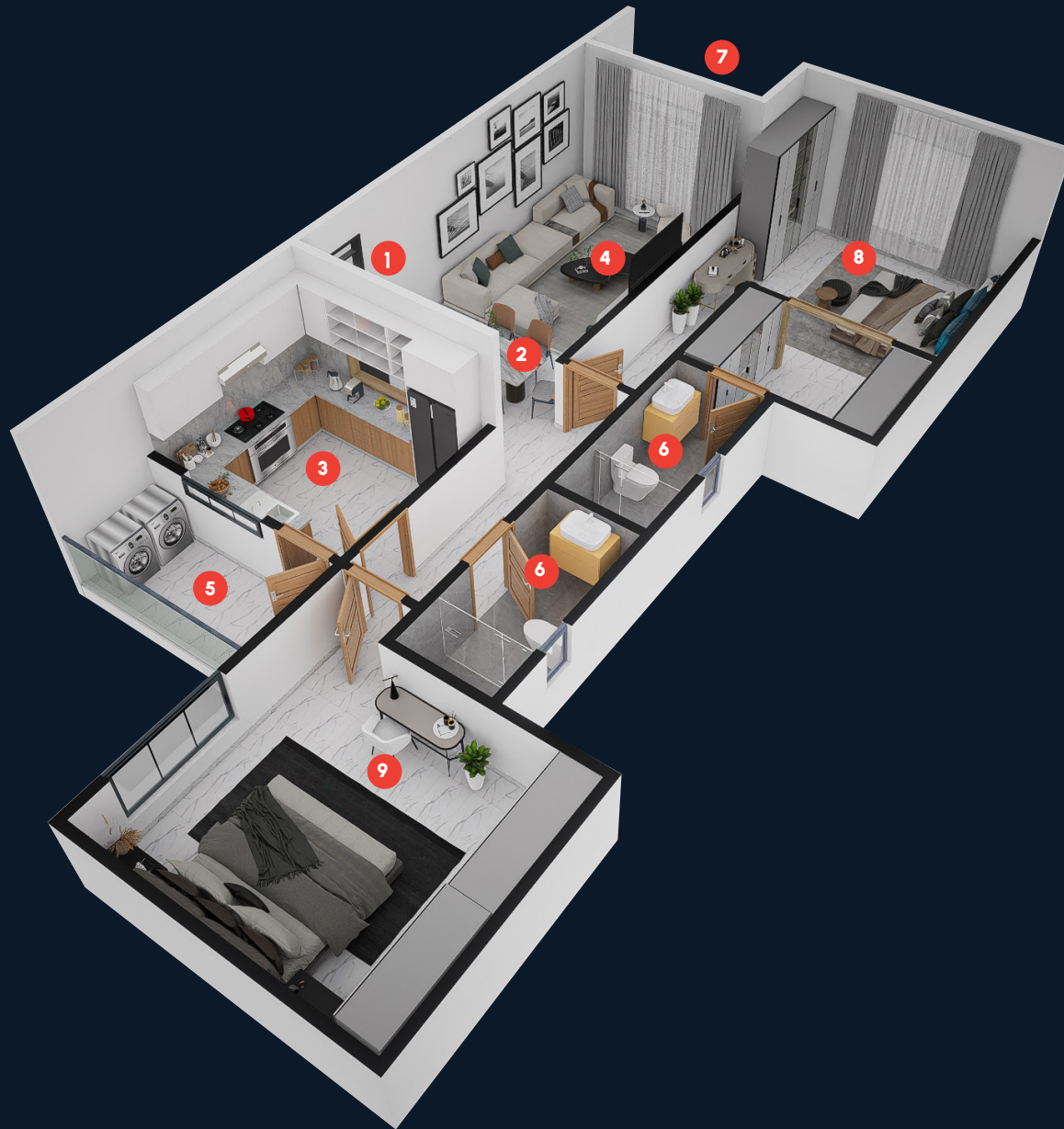
- 1.Entry Lobby
- 2.Dining
- 3.Kitchen
- 4.Dsq
- 5.Utility/Yard
- 6.WC/SH
- 7.Lounge
- 8.Balcony
- 9.Master Bedroom
- 10.Bedroom 01
- 11.Bedroom 02
- 12.Bedroom 03

FLOOR PLAN

Name	Apartment D
Type	2 BEDRM Kitchen,Dining,lounge Master Bedroom,1 Bedroom Balcony & 2 Baths
Area	124 sqm



APARTMENT D | 2 BEDROOM
124 sqm



- 1.Entry Lobby
- 2.Dining
- 3.Kitchen
- 4.Lounge
- 5.Utility/Yard
- 6.WC/SH
- 7.Balcony
- 8.Master Bedroom
- 9.Bedroom 01

PAYMENT PLAN:

ONE TIME PAYMENT - 15% DISCOUNT

UNITS	SIZE	PRICE	35% DEPOSIT	2ND PAYMENT	3RD PAYMENT
2 BEDRM	82 SQM	\$54,000	\$18,900	\$ 18,900	\$16,200
2 BEDRM	120 SQM	\$79,000	\$27,650	\$27,650	\$23,700
2 BEDRM	124 SQM	\$82,000	\$28,700,	\$28,700	\$24,600
2 BEDRM	150 SQM	\$99,000	\$34,650	\$34,650	\$29,700
2 BEDRM	155 SQM	\$102,000	\$35,700	\$35,700	\$30,600
2 BEDRM	160 SQM	\$106,000	\$37,100	\$37,100	\$31,800
3 BEDRM + Dsq	200 SQM	\$132,000	\$46,200	\$46,200	\$39,600
4 BEDRM + Dsq	230 SQM	\$152,000	\$53,200	\$53,200	\$45,600
4 BEDRM + Dsq	250 SQM	\$165,000	\$57,750	\$57,750	\$49,500
5 BEDRM + Dsq (DUPLEX)	335 SQM	\$221,000	\$77,350	\$77,350	\$66,300

CONTACT US ON:

+254 113 700 100

+254 113 656 666

+254 113 680 000

KARURA VIEW
Apartments

You know what you want .We know what you want so we built it.